

# COMMERCE DRIVE LOTS

COMMERCE DRIVE TEMPERANCE, MI 48182

FOR MORE INFORMATION, CONTACT DOUG FLICK | 419.724.2222 | DFLICK@EIDIPROPERTIES.COM



- 3 lots sold as a package surrounding Bedford Plaza, which is located on Lewis Avenue in Temperance, Michigan. Just .5 miles over the state line, the area attracts interest of Toledo, Ohio residents in addition to residents of Lambertville and nearby towns in Monroe County.
- Commerce Drive Lot 3: .331 Acres; Lot 4: 1.034 Acres; Lot 5: 1.338 Acres.
- Zoned Commercial. Declaration of Covenants also allow for residential or Industrial.
- All utilities available.

## PROPERTY DEMOGRAPHICS

	1 MILE	3 MILE
 POPULATION	4,709	38,723
 MED. INCOME	\$94,935	\$73,630

## AVAILABLE LOTS:

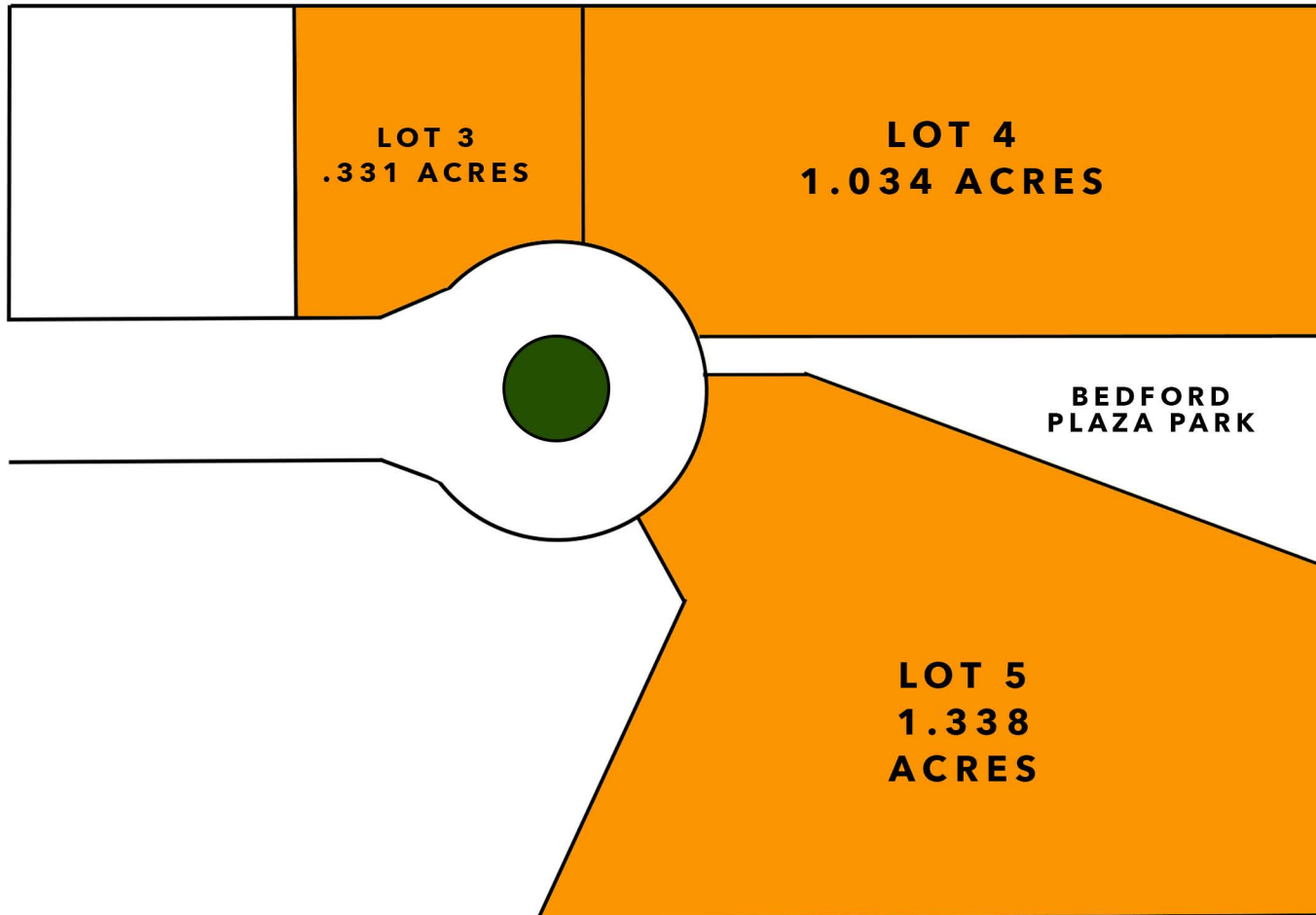
LOT 3: .331 ACRES  
LOT 4: 1.034 ACRES  
LOT 5: 1.338 ACRES

**SALE PRICE:**  
\$149,000 (3 LOTS)

# COMMERCE DRIVE LOTS

COMMERCE DRIVE TEMPERANCE, MI 48182

FOR MORE INFORMATION, CONTACT DOUG FLICK | 419.724.2222 | DFLICK@EIDIPROPERTIES.COM



Disclaimer: The site plan shows approximate location, square footage and configuration of the shopping center and adjacent areas, and is only illustrative of the size and relationship of the stores and common areas generally, all of which are subject to change. The showing of any names of tenants, parking spaces, square footage, curb-cuts of traffic controls shall not be deemed to be a representation or warranty that any tenants will be at the shopping center, the square footage is accurate, or that any parking spaces, curb-cuts or traffic controls do or will continue to exist. Moreover, any demographics set forth in this flyer are for illustrative purposes only and shall not be deemed a representation by Landlord or their accuracy.

# COMMERCE DRIVE LOTS

COMMERCE DRIVE TEMPERANCE, MI 48182

FOR MORE INFORMATION, CONTACT DOUG FLICK | 419.724.2222 | DFLICK@EIDIPROPERTIES.COM

