

DEER CREEK COMMONS

7300 SECOR RD. LAMBERTVILLE, MI 48144

FOR MORE INFORMATION, CONTACT DOUG FLICK | 419.724.2222 | DFLICK@EIDIPROPERTIES.COM



2,000 SF Fully Built out QSR Available with Drive-Thru | \$24/SF NNN

DEER CREEK COMMONS

7300 SECOR RD. LAMBERTVILLE, MI 48144

FOR MORE INFORMATION, CONTACT DOUG FLICK | 419.724.2222 | DFLICK@EIDIPROPERTIES.COM



**YOUR
SIGN HERE**

**2,000 SF
AVAILABLE
WITH DRIVE-THRU**

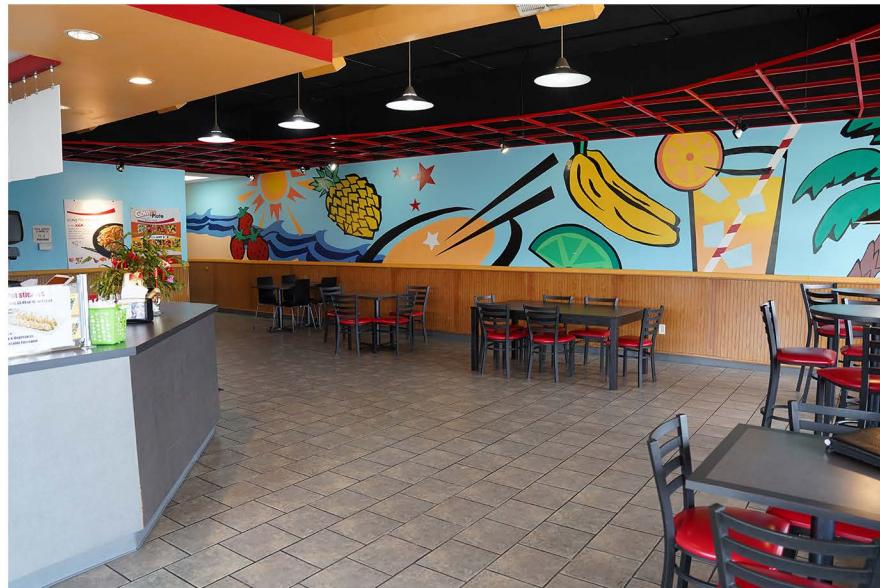
2,000 SF Fully Built out QSR Available with Drive-Thru | \$24/SF NNN

DEER CREEK COMMONS

7300 SECOR RD. LAMBERTVILLE, MI 48144



FOR MORE INFORMATION, CONTACT DOUG FLICK | 419.724.2222 | DFLICK@EIDIPROPERTIES.COM

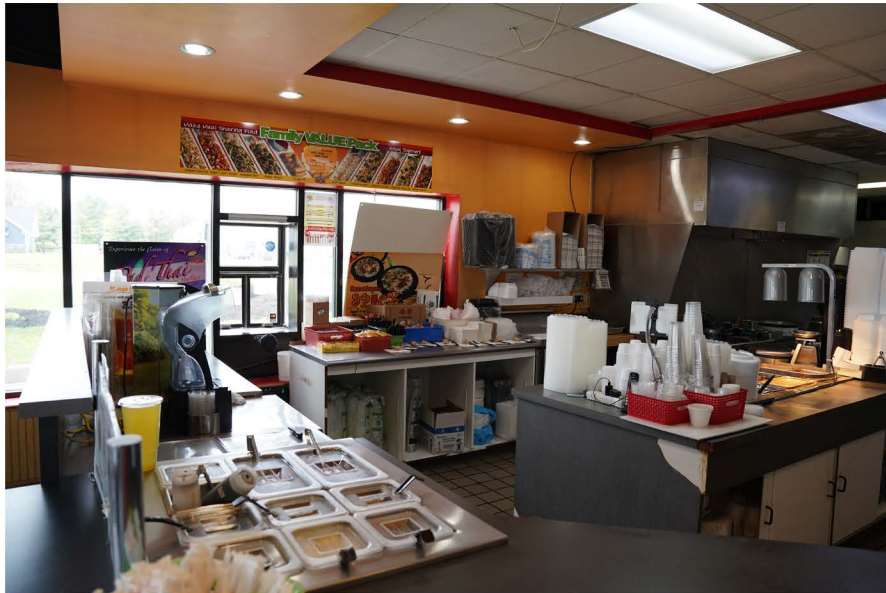


DEER CREEK COMMONS

7300 SECOR RD. LAMBERTVILLE, MI 48144



FOR MORE INFORMATION, CONTACT DOUG FLICK | 419.724.2222 | DFLICK@EIDIPROPERTIES.COM



DEER CREEK COMMONS

7300 SECOR RD. LAMBERTVILLE, MI 48144

FOR MORE INFORMATION, CONTACT DOUG FLICK | 419.724.2222 | DFLICK@EIDIPROPERTIES.COM



- Located on Secor Road, just south of the Secor & Sterns intersection, in Lambertville, Michigan, just 1/2 mile from Toledo, Ohio.
- Deer Creek Plaza maintains a stable base of tenants including Anytime Fitness, ProMedica, ATI Physical Therapy and American Table Restaurant to name a few.
- The immediate area is primarily commercial, featuring other retail shopping centers that include a Kroger Marketplace, Burger King, McDonald's, Rite Aid, Fifth Third Bank, Tractor Supply Company, O'Reilly Auto Parts, and Auto Zone.
- Toledo City Limits are just minutes away to the south. Three miles east of the shopping plaza lies Monroe Community College. Surrounding the shopping plaza are numerous family-centered, residential subdivisions.

PROPERTY DEMOGRAPHICS



POPULATION

	1 MILE	3 MILE	5 MILE
POPULATION	5,496	48,829	130,866



AVERAGE
HH INCOME

AVERAGE HH INCOME	\$110,900	\$88,100	\$80,200
----------------------	-----------	----------	----------

TENANTS INCLUDE

AMERICAN TABLE
ANYTIME FITNESS
ATI PHYSICAL THERAPY
ZANE'S

BUILDING SIZE:

33,530 SF

AVAILABLE SPACE:

2,000 SF

LEASE RATE:

\$24/SF NNN

DEER CREEK COMMONS

7300 SECOR RD. LAMBERTVILLE, MI 48144

FOR MORE INFORMATION, CONTACT DOUG FLICK | 419.724.2222 | DFLICK@EIDIPROPERTIES.COM



Disclaimer: The site plan shows approximate location, square footage and configuration of the shopping center and adjacent areas, and is only illustrative of the size and relationship of the stores and common areas generally, all of which are subject to change. The showing of any names of tenants, parking spaces, square footage, curb-cuts of traffic controls shall not be deemed to be a representation or warranty that any tenants will be at the shopping center, the square footage is accurate, or that any parking spaces, curb-cuts or traffic controls do or will continue to exist. Moreover, any demographics set forth in this flyer are for illustrative purposes only and shall not be deemed a representation by Landlord or their accuracy.

DEER CREEK COMMONS



7300 SECOR RD. LAMBERTVILLE, MI 48144

FOR MORE INFORMATION, CONTACT DOUG FLICK | 419.724.2222 | DFLICK@EIDIPROPERTIES.COM

